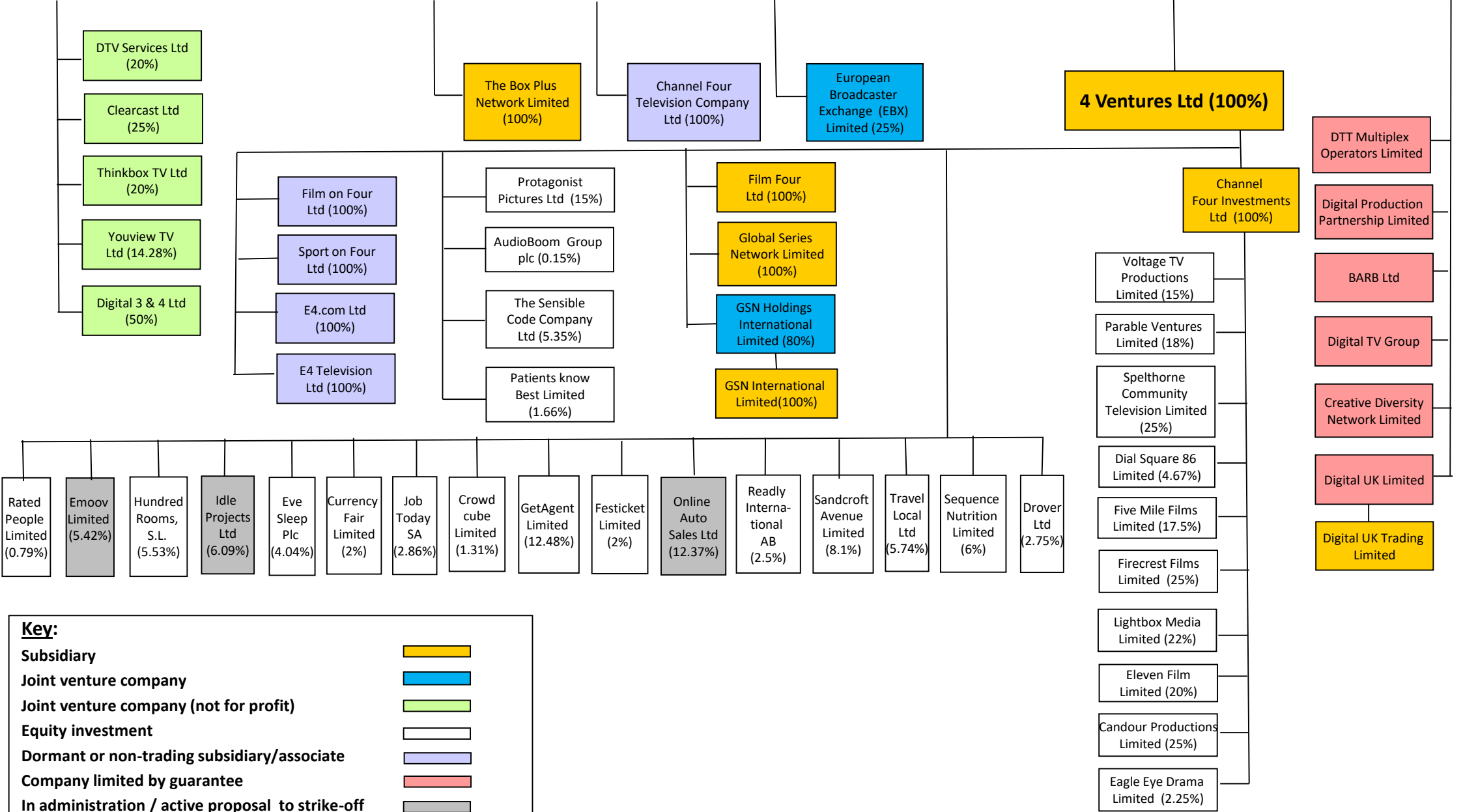


Channel Four Television Corporation



Key:

- Subsidiary** (Yellow box)
- Joint venture company** (Blue box)
- Joint venture company (not for profit)** (Light Green box)
- Equity investment** (White box)
- Dormant or non-trading subsidiary/associate** (Light Purple box)
- Company limited by guarantee** (Pink box)
- In administration / active proposal to strike-off** (Grey box)